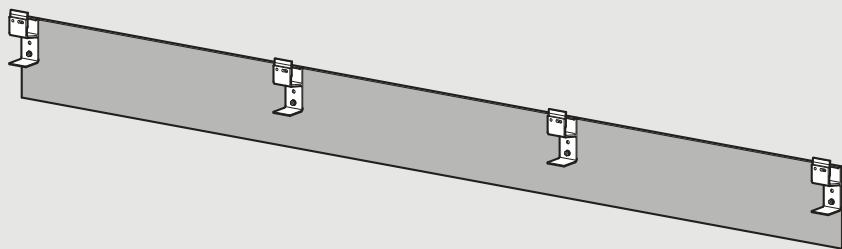


Installation and user instructions

# PlankClip System



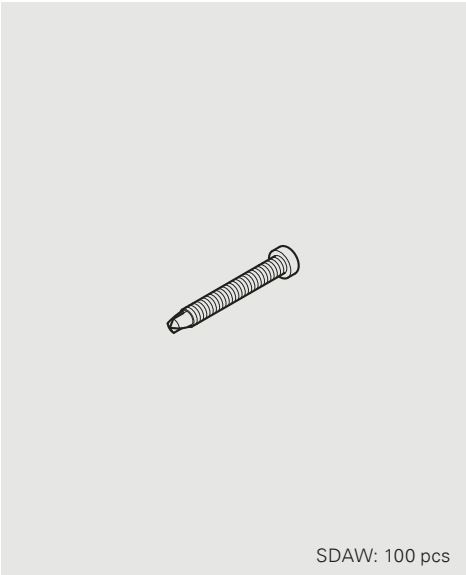
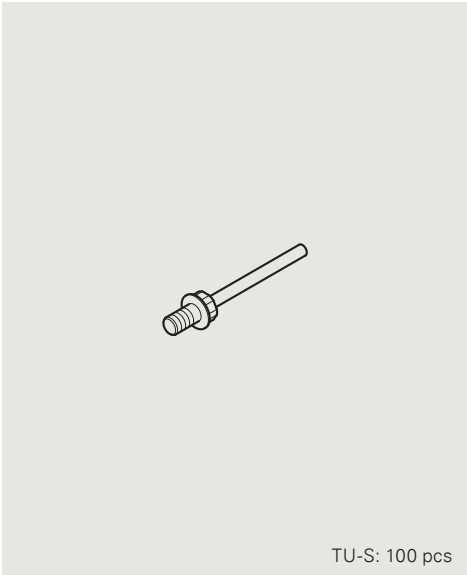
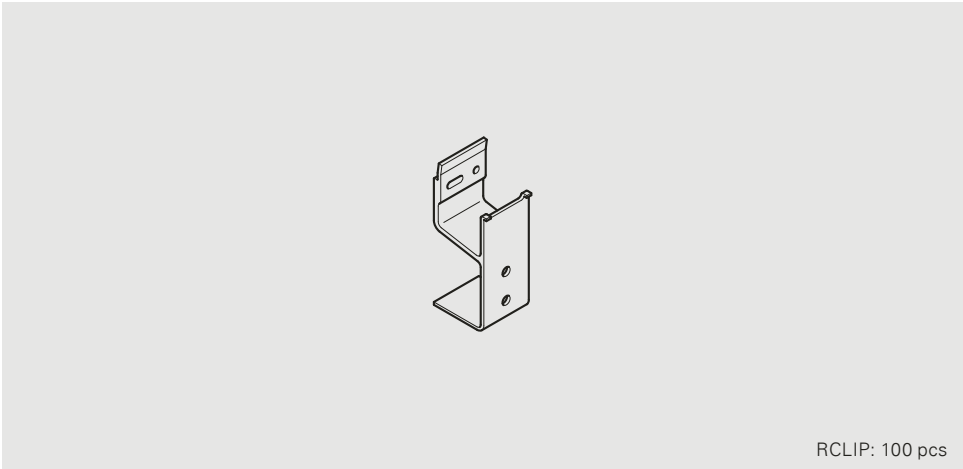


# Content

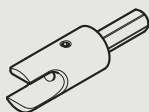
Installation kit	4
Additional items	5
Installing the RCLIPS to the panel	6
Preparation of subframe	9
Installing the panels	10

**Installation kit**  
**PLANKCLIP-KIT-100-145**

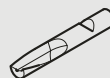
Used for  
planks with a  
height of  
100–145 mm



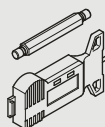
## Additional items Required for installation



**Depth Locator Universal**  
for VHM drill bit



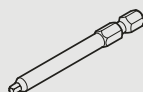
**VHM-6.0x41.5**  
Drill bit for suitable drilling depth, used in  
combination with Depth Locator Universal



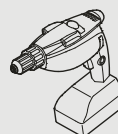
**MEASURING-SET-DRILLS-5.9-6.0**  
To control the depth of the blind hole as  
well as the tolerance of the diameter



**Riveting tool**  
e.g., PowerBird Pro or  
AccuBird® Pro from GESIPA®

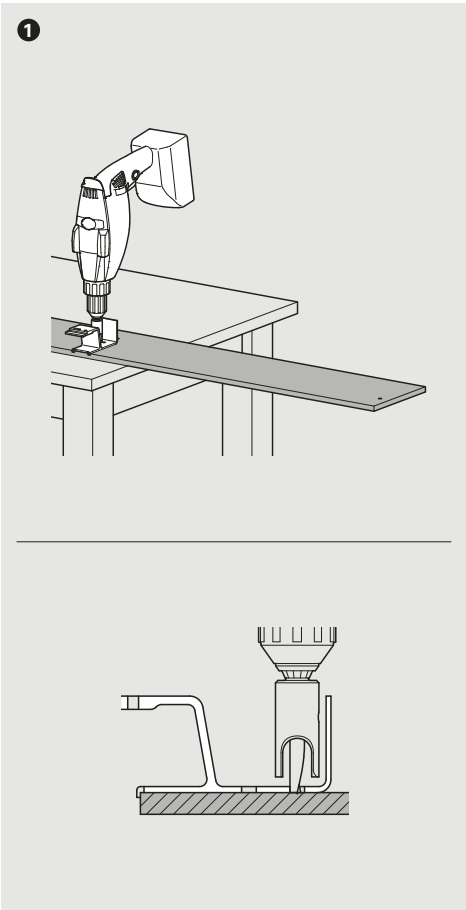
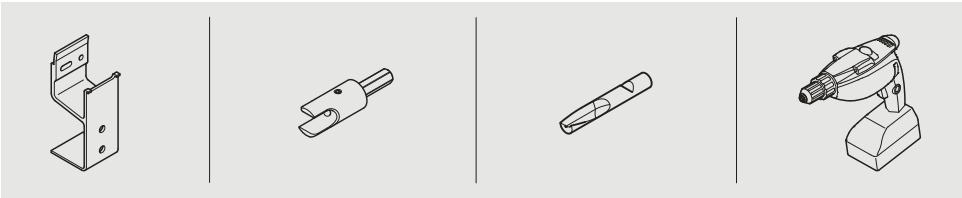


**SQ1-68-HEX-1/4"**

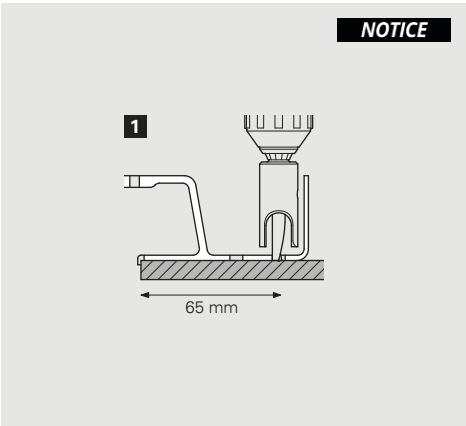


**Cordless drill**

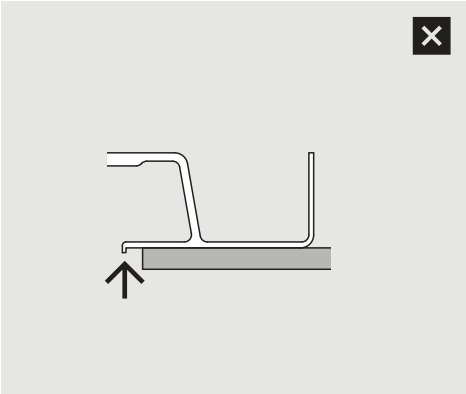
# Installing the RCLIPS to the panel



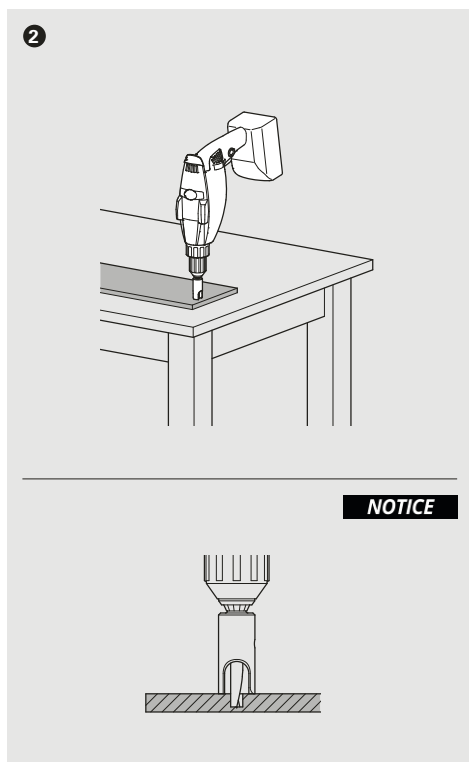
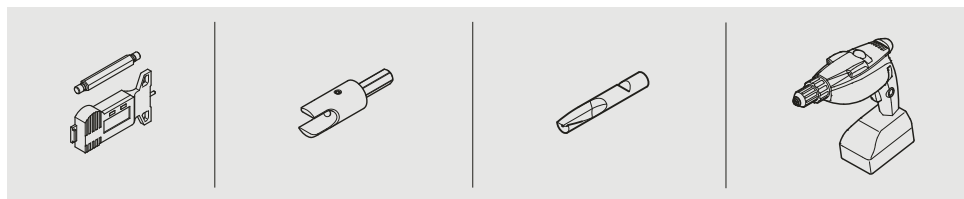
Use the RCLIP to mark the correct drill position.



**1** Use the hole that is closer to the edge of the panel.



Make sure that the nose of the RCLIP is placed close to the edge of the panel.



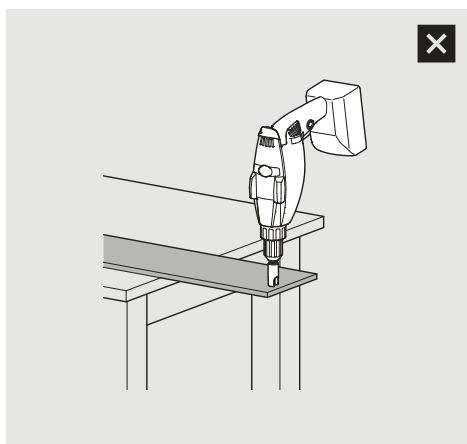
**NOTICE**

Pre-drill a  $\varnothing$  6 mm blind hole according the needed drill pattern. Check the dimension of the first hole and then at least every one hundred holes.

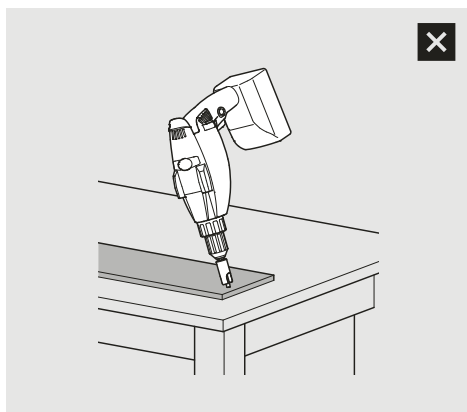
Diameter:  $\varnothing$  5.9–6.0 mm

Drill depth: 6.5–7.0 mm

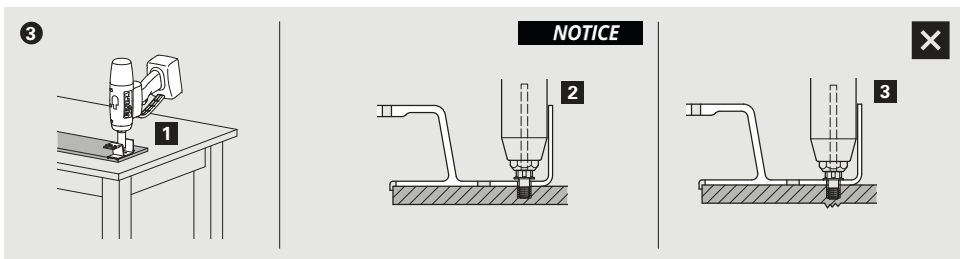
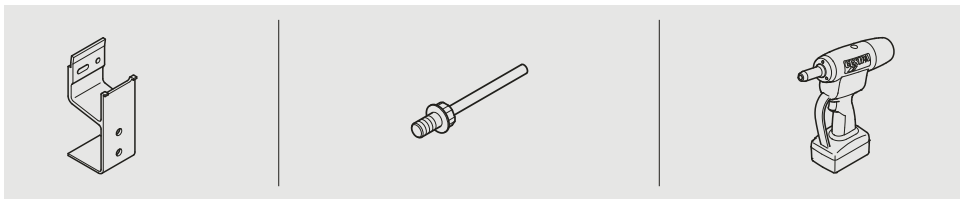
Can be measured with the measuring drill set.



Panel must lie on a hard surface and be fully supported.



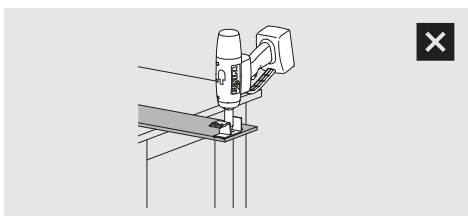
Drill must be held perpendicular to the panel face.



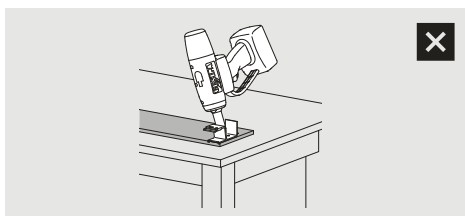
**1** Position the RCLIP over the hole and insert the anchor.

**2** Before setting, there can be a small gap between TU-S head and the RCLIP.

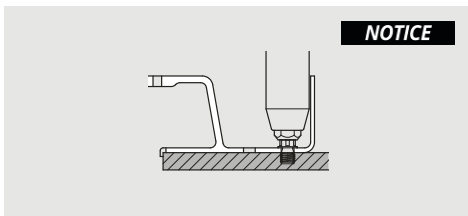
**3** Do not apply force to the anchor before setting, as this may cause damage to the panel face.



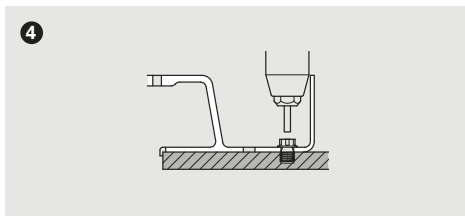
Panel must lie on a hard surface and be fully supported.



Rivet gun must be held perpendicular to the panel face.



Remove the mandrel while providing moderate force towards the panel. Use either the 17/36 or 17/40 GESIPA® nosepiece.



Repeat the process until all RCLIPs are installed.

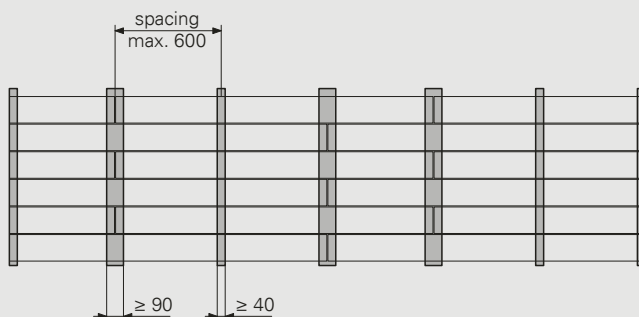


# Preparation of subframe



1

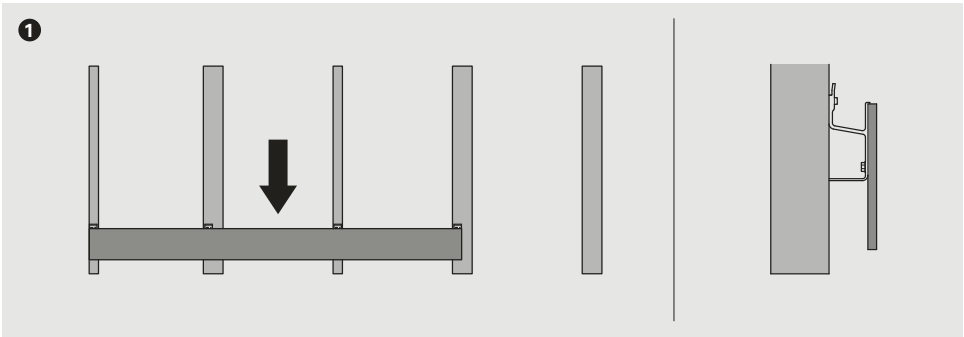
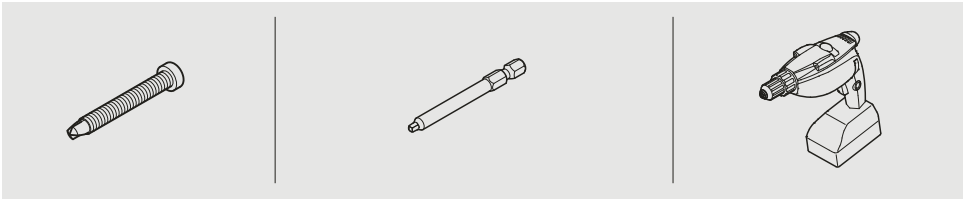
**NOTICE**



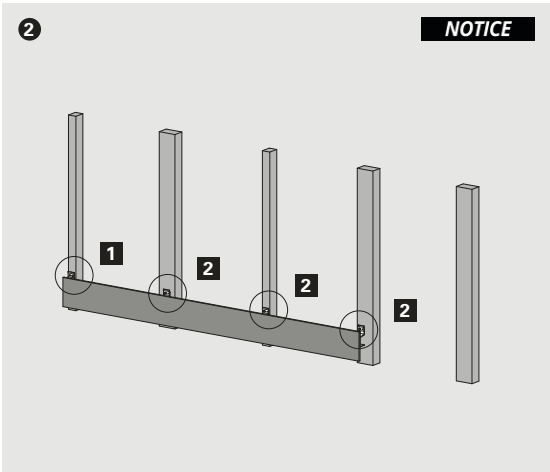
Install the vertical or horizontal subframe. The spacing is determined by project-specific static calculations but must not exceed 600 mm. The spacing is to be measured from profile center to profile center.

Intermediate profiles that have to accommodate 1 RCLIP must have a width of  $\geq 40$  mm. Jointing profiles that have to accommodate 2 RCLIPS must have a width of  $\geq 90$  mm.

# Installing the panels

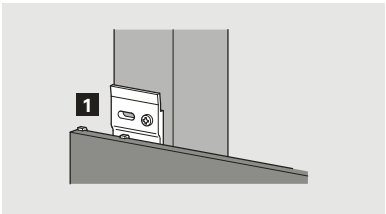


Position the panel with the attached RCLIPS onto the subframe.



Finish the installation of a panel by installing each RCLIP to the subframe using the fastener.

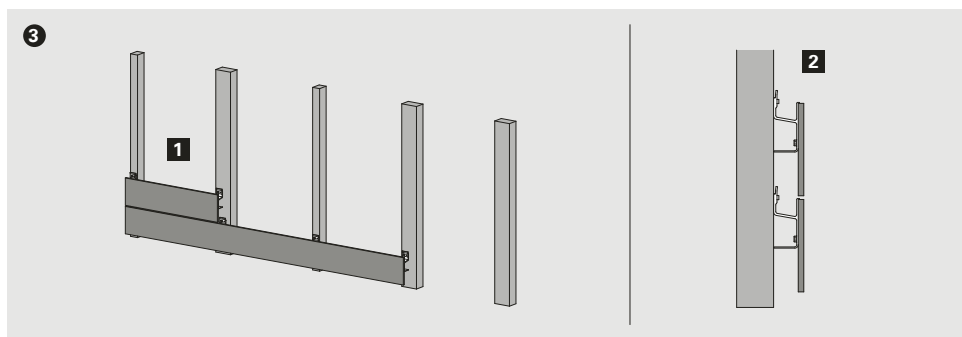
Create the fixed point first since this will hold the panel in place.



Create one fixed point per panel by installing the RCLIP via the round hole.



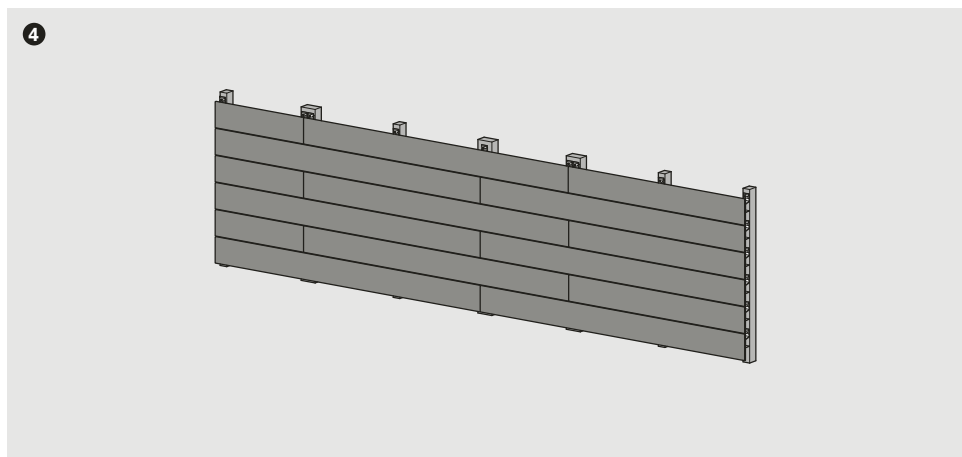
All the other RCLIPS must be attached via the center of the long hole.



**1** Start the installation of the panels in the second row by inserting these into the CLIPS that are present.

**2** To keep the panel joint of 6 mm the use of a spacer is recommended.

Fix the panel according step **2**.



Repeat step **3** by installing row after row until you've finished your façade.



**Disclaimer**

To the extent allowed by local law, except for the warranties set forth above, SFS makes no representations or warranties of any kind whatsoever, express or implied, including, without limitation, warranties of merchantability, non-infringement and fitness for a particular purpose, concerning the Product. All other guarantees, warranties, conditions and representations, either express or implied, whether arising out of any statute, law, commercial usage or otherwise, are hereby excluded. While SFS and its representatives may, from time to time, offer recommendations and advice with respect to the use of the Product, it is understood that any such recommendations and advice are not warranties by SFS and the purchaser will act upon any such recommendations and advice at the purchaser's sole risk.