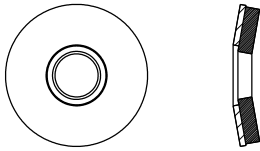


washer style guide

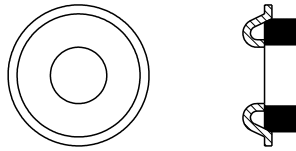


Bond Seal



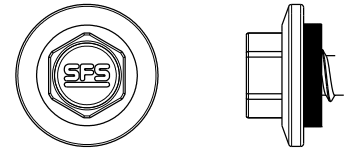
- EPDM rubber bonded to metal
- Available in galvanized, stainless, & aluminum configurations
- Bonded washers offer a low-profile appearance and positive weather seal between panel and fastener
- Weather tight seal contingent on proper installation techniques*

Control Seal



- EPDM rubber captured under a stamped "dome"
- Reinforced domed shoulder distributes clamp load
- When installed, EPDM washer is compressed against key areas
- Weather tight seal regardless of incorrect installation techniques

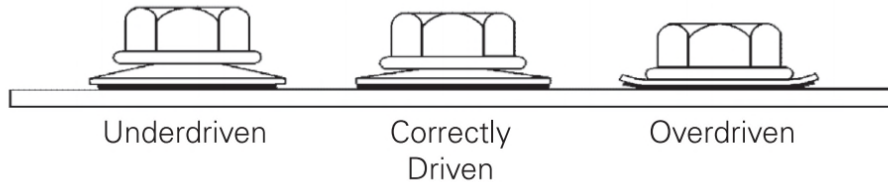
Sealer Cupped



- EPDM rubber captured under integrated cupped head
- Fastener head style helps to prevent overdriving
- EPDM washer protected from UV rays by cupped head
- Weather tight seal due to cupped design

*Proper Installation Technique

It is important to install fasteners so the washer is properly seated, allowing the EPDM sealing material to seal and perform as intended. Both over tightening and under tightening can lead to water leaks. The use of a depth setting nosepiece is always recommended. Use of impact guns or hammer drills is not recommended.



Seal Testing

In order to ensure long term integrity of a building structure, water tightness in the connection of exterior metal panels is critical. All SFS fasteners and washers are thoroughly tested to ensure a weather tight seal is achieved. This includes testing with a specialty pressure gauge and subjecting the seal to a 24 hour water pressure test.

